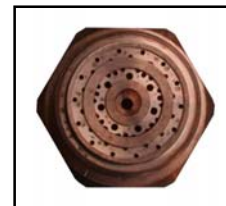


Punta da Taglio Cutting Nozzle

Mod. **SL/AV3**

Serie	Art. n. P. / N.
SL/AV3 18	96518-3
SL/AV3 22	96522-3
SL/AV3 25	96526-3
SL/AV3 33	96533-3
SL/AV3 35	96535-3
SL/AV3 40	96540-3
SL/AV3 52	96552-3



Costruzione: Monoblocco Rame
Punta a miscelazione interna
Tripla corona miscelata
Punta da taglio Bramme / Billette
Cannello da taglio: Mod. **SL/CAV3**

Construction: Copper monoblock
Self mixing cutting nozzle
Triple mixed crowns
Cutting nozzle for Slab and Billet cutting
Cutting torch: Style **SL/CAV3**

Construction: monobloc Cuivre
Buse avec mélange interne
Triple couronne mélangeuse
Buse de coupe Brames / Billettes
Chalumeau de coupe: Mod. **SL/CAV3**

Construcción: monobloque en Cobre
Boquilla a mezcla interior
Triple corona mixtos
Boquilla de corte Planchones / Palanquillas
Soplete de corte: Mod. **SL/CAV3**

SL/AV3 Style		18	22	25	33	35	40
Cutt. Oxygen	Bar	18	17	16	13	11	9
Heat. Oxygen		2,0 - 3,0					
Methane		1,0 - 2,5					
Propane		0,7 - 1					
Cutt. Oxygen	Nmc/h	30	33	36	42	55	61
Heat. Oxygen		23 - 26					
Methane		30 - 36					
Propane		10 - 15					
Kerf	mm	5,5	5,7	6,0	6,5	8,0	9,0
Burr		5,0	5,5	6,0	7,0	8,0	9,0
Distance		100 - 140					
Noise	DbA	104					

Velocità di taglio / Cutting speed mm/min.				
Spessore Thickness	Temp. Temp.	20°	600°	800°
120 mm		407	662	761
150 mm		345	586	609
200 mm		276	494	529
220 mm		257	460	494
250 mm		230	414	448
300 mm		195	345	379
400 mm		126	241	264

Materiale / Material : Carbon Steel < 0,3% C. eq.

Purezza / Purity O2 : 99,7%

Pressioni / Pressure: al cannello / at torch inlet

Punte / Nozzle : Nuove / New



SALDOTECNICA

LIGURE